



ООО «Полимер Экспорт»

ПРОМЫШЛЕННЫЕ ЛАКОКРАСОЧНЫЕ ПОКРЫТИЯ

8 (4932)773-503



raum-profile.ru
lnmarketing@gk-rp.ru



Release date: 1.10.2024.

Manufacturer: Russian Federation

TY 20.30.22-021-69372620-2023

Primer EPPEX PLP

CERTIFICATE

MSDS № № 69372620.20.51012 от 30.05.2025 г.

DESCRIPTION

EPPEX PLP is epoxy two-component anticorrosive primer. It consists of a semi-finished primer EPPEX PLP (component A) and a hardener EPPEX PLP (component B).

FIELDS OF APPLICATION

EPPEX PLP primer has antistatic properties and is used as an independent coating for corrosion protection of internal steel surfaces of different types of tanks, process pipelines and other equipment for various light petroleum products storage and transportation, including jet fuel, gasoline, lubricating oils, diesel fuel, kerosene, fuel oil. EPPEX PLP primer is suitable for corrosion protection of pipelines and crude oil pumping equipment, storage tanks for various liquids, solutions of reagents with slightly acidic and slightly alkaline media, detergents, alcohol-containing liquids.

The coating is resistant to fresh and sea water, urban and industrial atmospheres, as well as to solutions of acids, alkalis, alcohols, light and dark petroleum products with operating temperatures up to +60 ° C. The thickness of a single-layer application is up to 300 microns of dry film, which significantly reduces the time for painting work. It provides high hardness, good adhesive strength and anti-corrosion resistance of the paint coating system.

TECHNICAL DATA

Colour	Grey, black.	
Mass fraction of dry residue component A	89±3%	
Adhesion to metal (GOST 15140), no more	1 point	
Density component A	1,53±0,05 g/cm ³	
Density components A+B	1,43±0,05 g/cm ³	
Max. one layer thickness, viscosity 25 s	400 microns wet layer	
Dry volume residue	75±3%	
Dry film thickness and estimated consumption	Dry film thickness, mc	Estimated consumption, g/m ²
	min	286
	max	572
Hardener	EPPEX PLP	
Readiness for operation	7 days	

Due to the wide range in color and / or gloss, this description is informative.
Certificate of quality is the document confirming the quality of each production lot.

INSTRUCTION FOR USE

Metal surface should be abrasive blasted to grade 1 or 2 due to GOST 9.402 (Sa 2^{1/2} or Sa 2 to ISO 8501-1:2007). Cleaned surface must be free of dust and grease.
If the quality of surface preparation decreases, the service life and its operating performance may change.

CONDITIONS

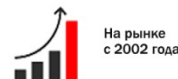
Two component epoxy primer EPPEX PLP is applied on the surface at the air temperature from +5°C to +35°C and relative humidity no more 80%. Surface temperature should be 3° higher than dew point.

APPLICATION

Blending

The product is two components. Component A is a dispersion of pigments and anticorrosion filler in epoxy resin. Component B is a hardener solution. Mix the contents of the containers in the supplied proportions. After mixing, use within the specified pot life.

Mixing sequence:



The basis (component A) is mixed with a construction mixer. Then mixed hardener (component B) is added to the basis (component A) and thoroughly mixed with a construction mixer.

Attention! Careless mixing or incorrect ratio can lead to uneven curing and painting film properties weakening.

Proportions	100:16 by weight 4:1 by volume
Pot life at 20°C, no less	2 hours
Air-free spraying	Thinning: 0-10% Nozzle diameter: 0,011-0,017" Initial pressure: 120-180 atm
Air spraying	Operation viscosity: 70-80 s Thinning: 5-20% Nozzle diameter: 1,8-2,5 mm Initial pressure: 3,0-4,0 atm
Cross linking at 20°C	3 hours
Brush, roller	Can be recommended for small and hard-to-reach areas. Thin the primer depending on the working conditions when using brush.
Thinner	Formula thinner EPPEX
Cleaner	Formula thinner EPPEX, thinners of type P4, P5.
Closing-down	Tubing, pistol and other spraying tools must be cleaned after using
Cleaning	Wash the tools after using immediately. The frequency of washing depends on the amount of sprayed material, the temperature and the time since the shutdown, including any time lag.

PACKAGE SIZE

Metal euro bucket 21 l: basis 23 kg
Metal bottle 5 l: hardener 3,7 kg

STORAGE

Store in a tightly closed container in a dry room at a temperature from -40 °C to +40 °C, away from sources of ignition, protecting from direct sunlight and moisture.

GUARANTEED STORAGE LIFE

Expire date of EPPEX PLP primer (component A) and EPPEX PLP hardener (component B) is 24 months in case if delivery and storing rules are followed. After expire date shouldn't be used without tests

HEALTH AND SAFETY

When painting work, use personal protective equipment (respirators, gloves, glasses, etc.). Work inside the room should be carried out with artificial (local, general) or natural ventilation. Use the primer only in places without sources of open fire and ignition. Avoid contact with skin or eyes. In case of skin contact immediately wipe with a rag or cotton swab, rinse thoroughly with soapy water, do not use solvents. In case of eyes contact rinse with clean water for at least 10 minutes, consult a doctor. In case of ingestion, consult a doctor.

RECYCLING

Packing materials are recycled as consumer waste.

Further Information.

The recommendations above are based on our own research and our best knowledge but don't fully guarantee any particular case as it depends on the quality, friability and porosity of the base. The local working conditions and methods may vary and are beyond our control. Therefore we cannot be held responsible for the actual work on the site. The information is currently updating.



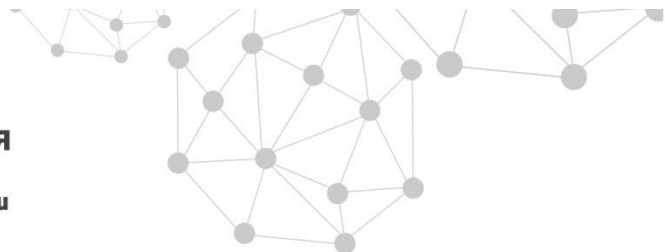
ООО «Полимер Экспорт»

ПРОМЫШЛЕННЫЕ ЛАКОКРАСОЧНЫЕ ПОКРЫТИЯ

 **8 (4932)773-503**



raum-profile.ru
lnmarketing@gk-rp.ru



Собственное
современное
производство



Система
Менеджмента
Качества
(ISO 9001)



Аттестованная
лаборатория



На рынке
с 2002 года